

SGA2

DOUBLE CYLINDER KNIFE VALVE

LeBlansch
Bulkhandling Equipment

COMAV'S SLIDE GATE VALVE SGA2 is designed to shut off the flow of product from outlets of dry bulk storage bins, silos, conveyors and other discharge points, it is recommended for hopper with weighting cells and dosing unit avoiding any problem of balance with consequence reading error.

SGA2 double cylinders is used where dust sealing is request, thank to self-calibrated spring that extend the service life by compensating for wear.

The slide gate valve meets the most demanding application on the market, with its compact size reduces the encumbrance problem allowing a wide variety of installations.



APPLICATIONS

GRAVIMETRIC FLOW

POWDER

GRANULE

PELLETS

DESIGN

SIZE: DN 150, DN 200, DN 250

BODY: CASTING ALUMINIUM

BLADE: STAINLESS STEEL AISI 304/316L

MAIN SEAL: NOVATRON

OPERATION: DOUBLE CYLINDER

OPTIONALS

SPECIAL EXECUTION
FOR ABRASIVE PRODUCT

FOOD GRADE APPROVED MATERIAL

VARIOUS CHEMICAL
TREATMENT ON BODY/FLAP

VARIOUS SEAL MATERIAL

HIGH TEMPERATURE VERSION

CUSTOM SIZE

FEATURES

PRESSURE: ATM, 1 BAR

TEMPERATURE: MAX 100 °C

RUGGED DESIGN

LONG LIFE

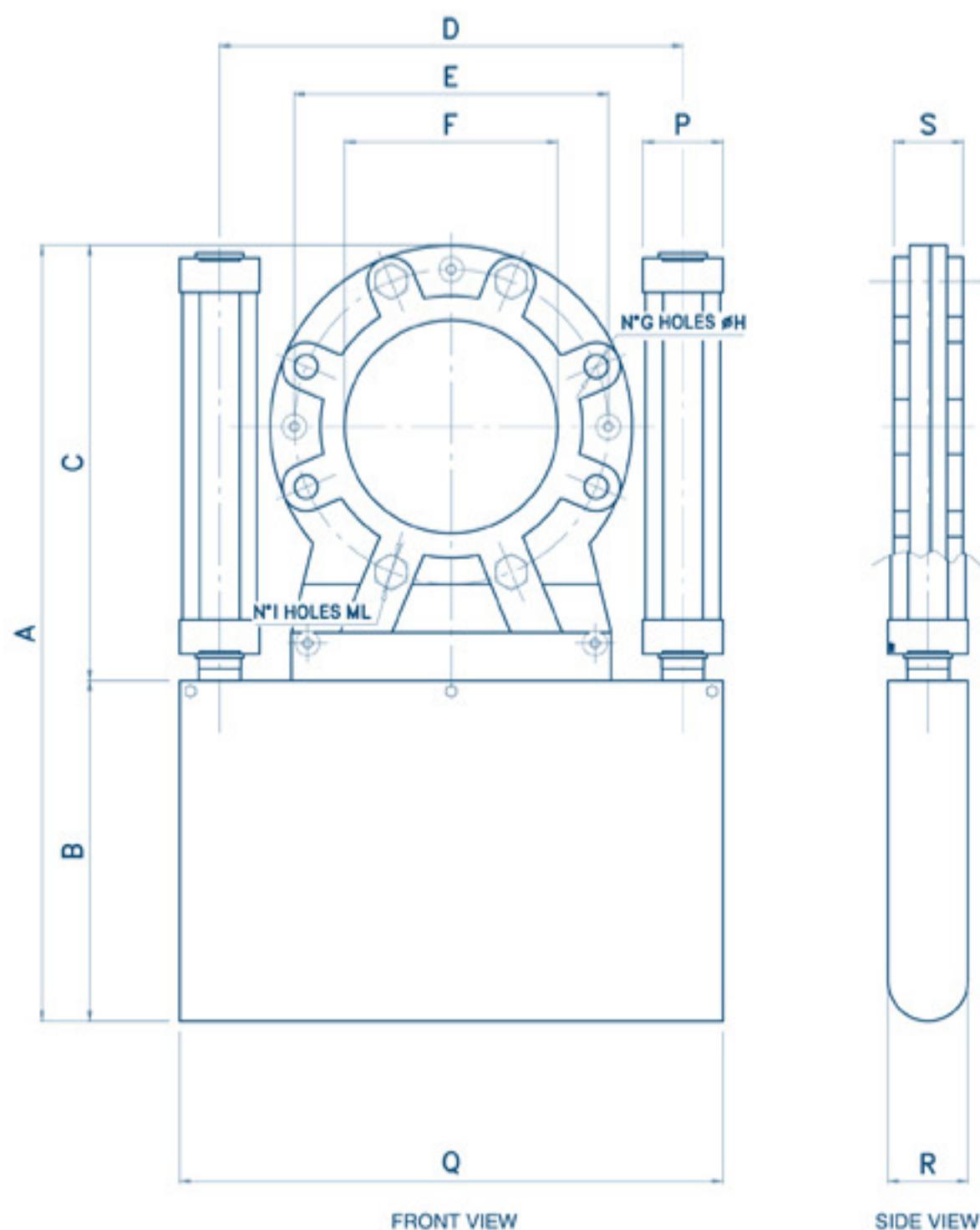
BROCHURE



COMPLIANCE



2/3DC T135*



FRONT VIEW

SIDE VIEW

	A	B	C	D	E	F	G x H	I x ML	P	R	S	Q
150	670	295	375	386	Ø240	Ø153	4 x Ø22	4 x M20	95	112	65	485
200	770	345	425	441	Ø295	Ø200	4 x Ø22	4 x M20	95	112	65	540
250	895	395	500	515	Ø350	Ø254	6 x Ø22	6 x M20	115	112	65	640