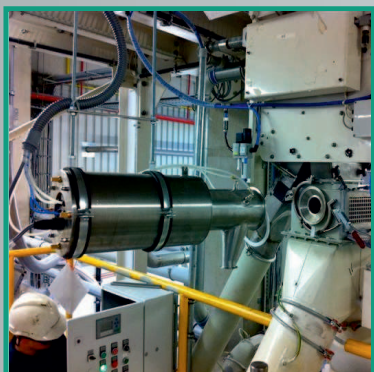




KERSTING GMBH
SAMPLING + GROUNDING



Representative and reproducible
sampling of solids



KERSTING GMBH
SAMPLING + GROUNDING

Your specialist for inline sampling

Today's methods of analysis can prove every substance in most products. However, state-of-the-art analysis alone is not a guarantee for reliable quality control, moreover every analysis is valid for the examined sample only. In order to make a true statement about the whole quantity, sampling, sample preparation and analysis have to be appropriately adjusted.



An important condition for quality and process control is REPRESENTATIVE sampling as the basis for subsequent examination. For the control of complex processes it is essential to have the opportunity to sample at every stage of production, at any given time. The technology used is of fundamental importance to do so. It must be reliable, ensure hygiene and tidiness, and must not alter the properties of the sample itself, brief: it needs to meet the standards like all other components.

The KERSTING samplers are the result of years of experience and uncounted installations in this area. They fulfil the highest expectations regarding quality, material, workmanship, operation and usability. The products in this folder represent the tools that you need for a reliable and consistent quality control of any bulk material.



KERSTING GMBH
SAMPLING + GROUNDING
Gallbergweg 21
59929 Brilon

T: +49 (0) 2961 7405 - 302
F: +49 (0) 2961 7405 - 349

info@kersting-ind.de
www.kersting-ind.de

Innovative samplers

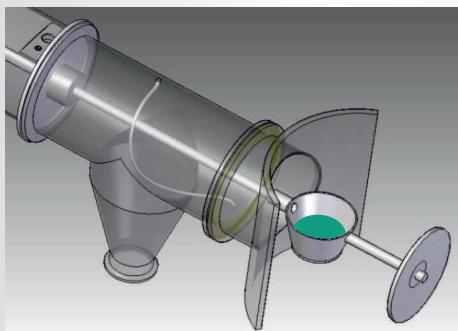
Cup sampler

For the smart and easy sampling of free falling powders / granules from downpipes up to DN 500

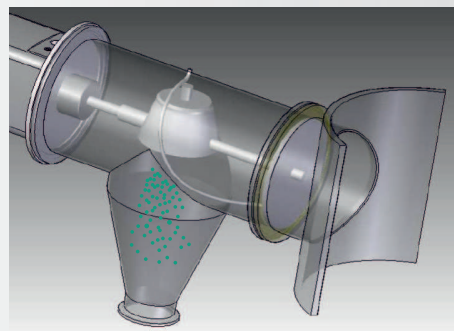
- Gentle to product
- Easy operation and controlling
- High quality materials (stainless steel AISI 316, seals PTFE or silicone)
- Simple and quick dismounting for cleaning or maintenance
- Due to the dead space free construction the sample is always fresh



Operation



Sampler in working position, cup is filling

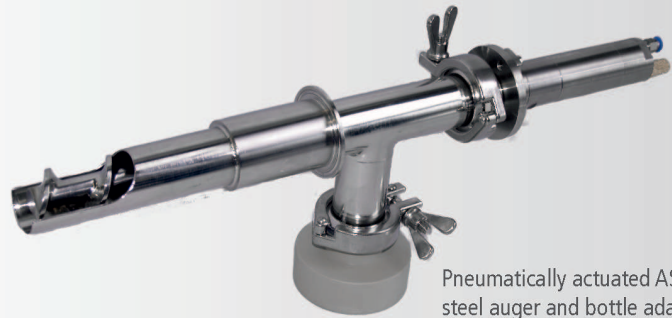


Sampler in parking position, cup is emptying

Auger sampler

Continuously sampling of any quantity from the product

- Suitable in the food and pharma industry
- Especially applicable for slow flowing products or products which stick together
- Actuation optionally by air motor, electric motor or crank handle
- Alternatively with auger from stainless steel AISI 316 or with segmented PAS auger
- Penetration into the 'bin, hopper or downpipe is adjustable



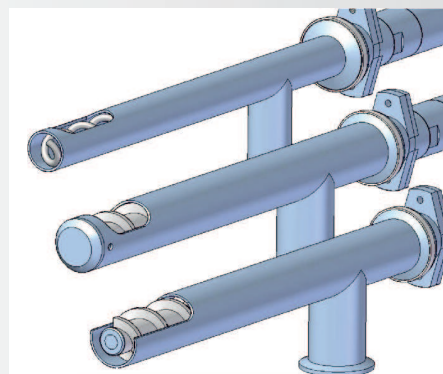
Pneumatically actuated AST with stainless steel auger and bottle adapter



MST with crank handle and ball valve



Stainless steel auger from the full material



Augers and geometries adapted to product

Plug sampler

- For taking samples out of non- pressurized systems in the food and pharma industry (Powder)
- Fixed sample volume
- Simple and quick dismounting for cleaning or maintenance
- Stainless steel AISI 316 and FDA-compliant materials
- Hand or pneumatically operated



Pneumatically operated APO

Sampler for pneumatic conveying lines

Application in transfer lines e.g. during the loading and unloading of silo trucks

- For pneumatic conveylines up to a pressure of 3.5 bar
- Squeeze valve from POM, food-safe sleeve



SamFlow sampling valve

Sampling port

Simple and economically sampler

- Suitable for free flowing powders / granules
- Available for pneumatic conveying lines



Sampling port SiloTasty

Sample collection systems

Bottle adapter / Bag holder

These systems are fixed to the sampler outlet spout with a Triclamp. The bottle adaptor is manufactured to suit GL 45 thread or custom made.



Bottle adapter



Bag holder

Ednless liner system

The most economic way to withdraw the samples from the sampler without risk of contamination is the use of an Endless liner system. In combination with our liner clips it is easy to separate the sample hermetically sealed while the process remains closed at all times. Especially with toxic products, both, operator and environment are protected.



Layflat collection system

Sample collection cabinet

A state-of-the-art quality control requires a high frequent sampling preferably without human labour. In order to maintain tracability it is necessary to change the sample containers according to the defined schedule. The new sample cabinet SamConomy is the most economic system for this task. It contains up to 24 sample containers, which are filled with product samples following a predefined schedule. The Siemens Logo SPS does control the belonging sampler via a 24V signal.



SamConomy cabinet