

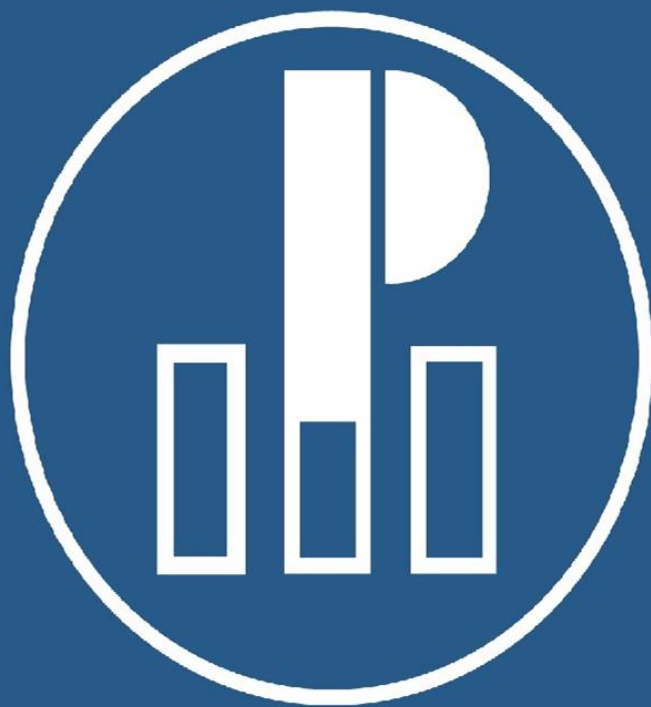


Prokosch
Pumpen und Armaturen GmbH

PROKOSCH VALVES

*Cost efficient, safe and reliable
flow control for transportation,
transfer and storage of solids,
liquids and hazardous materials*





QUALITY YOU CAN DEPEND ON

*Quality and reliability
with more than 60
years of design and
fabrication expertise*

*© Prokosch Pumpen und Armaturen GmbH. All information contained in this document is without prejudice and non-binding.
This document or any parts of this document may not be copied or reproduced without prior written consent by the copyright holder.*

PROKOSCH BALL VALVES

© Prokosch Pumpen und Armaturen GmbH. All information contained herein is without prejudice and non-binding.



Flanged Ball Valve Type 400

sizing and dimensions

Nominal Size	DN50...DN150 (2"...6")		
Pressure rating	PN16		
Inlet / outlet connection	Flange DIN EN 1092-1	Flange DIN EN 1092-1	
Body Materials	Cast iron	Aluminium	
Ball Materials	Hard chrome cast iron	Stainless Steel	
Seat Materials	PTFE	UHMWPE	stainless steel
Temperature rating	-40...180 °C	-40 °C...80 °C	-40 °C...230 °C
Gaskets	NBR	FKM	FEP
Temperature rating	-25...80 °C	-15...230 °C	-40...180 °C
Top assembly	Bare shaft	Hand lever	Actuator adapter
Actuation	Manual	Pneumatic	Electric
Standard options	aerodynamic outlet port for non-clogging application with solids		
	antistatic design for application in ATEX-environments		
	flushing port for flushing and for ejector application		
Actuator options	limit switches, pilot valve, ex-proof, pre-wiring of all components		
Custom options	additional armouring, nickel plating of aluminium for food grade application ANSI, BS, JIS drilling of flanges and other customization per request		

Three-piece trunnion mounted ball valve. Suitable for shut-off and control of neutral liquids and gases, and suitable for on/off duty with granulated media, powders and dusts as also neutral liquid suspensions.



PROKOSCH BALL VALVES

© Prokosch Pumpen und Armaturen GmbH. All information contained herein is without prejudice and non-binding.



Flange/Male Pipe Thread Ball Valve Type 410

sizing and dimensions

Nominal Size	DN50...DN100 (2"...4")		
Pressure rating	PN16		
Inlet / outlet connection	Flange DIN EN 1092-1	Male tread DIN ISO 259	
Body Materials	Cast iron	Aluminium	
Ball Materials	Hard chrome cast iron	Stainless Steel	
Seat Materials	PTFE	UHMWPE	stainless steel
Temperature rating	-40...180 °C	-40 °C...80 °C	-40 °C...230 °C
Gaskets	NBR	FKM	FEP
Temperature rating	-25...80 °C	-15...230 °C	-40...180 °C
Top assembly	Bare shaft	Hand lever	Actuator adapter
Actuation	Manual	Pneumatic	Electric
Standard options	aerodynamic outlet port for non-clogging application with solids		
	antistatic design for application in ATEX-environments		
	flushing port for flushing and for ejector application		
Actuator options	limit switches, pilot valve, ex-proof, pre-wiring of all components		
Custom options	additional armouring, nickel plating of aluminium for food grade application Couplings, ANSI, BS, JIS drilling of flanges and other customization per request		

Three-piece trunnion mounted ball valve. Suitable for shut-off and control of neutral liquids and gases, and suitable for on/off duty with granulated media, powders and dusts as also neutral liquid suspensions.

PROKOSCH BALL VALVES

© Prokosch Pumpen und Armaturen GmbH. All information contained herein is without prejudice and non-binding.



Tank Truck Ball Valve Type 420

sizing and dimensions

Nominal Size	DN50...DN100 (2"...4")		
Pressure rating	PN10	*optionally PN16	
Inlet / outlet connection	TW flange DIN 28460	TW flange DIN 28460	
Body Materials	Cast iron	Aluminium	
Ball Materials	Hard chrome cast iron	Stainless Steel	
Seat Materials	PTFE	UHMWPE	stainless steel
Temperature rating	-40...180 °C	-40 °C...80 °C	-40 °C...230 °C
Gaskets	NBR	FKM	FEP
Temperature rating	-25...80 °C	-15...230 °C	-40...180 °C
Top assembly	Bare shaft	Hand lever	Actuator adapter
Actuation	Manual	Pneumatic	Electric
Standard options	aerodynamic outlet port for non-clogging application with solids		
	antistatic design for application in ATEX-environments		
	flushing port for flushing and for ejector application		
Actuator options	limit switches, pilot valve, ex-proof, pre-wiring of all components		
Custom options	additional armouring, nickel plating of aluminium for food grade application ANSI, BS, JIS drilling of flanges and other customization per request		

Three-piece trunnion mounted ball valve. Suitable for shut-off and control of neutral liquids and gases, and suitable for on/off duty with granulated media, powders and dusts as also neutral liquid suspensions.



PROKOSCH BALL VALVES

© Prokosch Pumpen und Armaturen GmbH. All information contained herein is without prejudice and non-binding.



TW-Flange/Male Pipe Thread Ball Valve Type 430

sizing and dimensions

Nominal Size	DN50...DN100 (2"...4")		
Pressure rating	PN10	*optionally PN16	
Inlet / outlet connection	TW flange DIN 28460	Male tread DIN ISO 259	
Body Materials	Cast iron	Aluminium	
Ball Materials	Hard chrome cast iron	Stainless Steel	
Seat Materials	PTFE	UHMWPE	stainless steel
Temperature rating	-40...180 °C	-40 °C...80 °C	-40 °C...230 °C
Gaskets	NBR	FKM	FEP
Temperature rating	-25...80 °C	-15...230 °C	-40...180 °C
Top assembly	Bare shaft	Hand lever	Actuator adapter
Actuation	Manual	Pneumatic	Electric
Standard options	aerodynamic outlet port for non-clogging application with solids		
	antistatic design for application in ATEX-environments		
	flushing port for flushing and for ejector application		
Actuator options	limit switches, pilot valve, ex-proof, pre-wiring of all components		
Custom options	additional armouring, nickel plating of aluminium for food grade application Couplings, ANSI, BS, JIS drilling of flanges and other customization per request		

Three-piece trunnion mounted ball valve. Suitable for shut-off and control of neutral liquids and gases, and suitable for on/off duty with granulated media, powders and dusts as also neutral liquid suspensions.



PROKOSCH BALL VALVES

© Prokosch Pumpen und Armaturen GmbH. All information contained herein is without prejudice and non-binding.



Male Pipe Thread Ball Valve Type 440

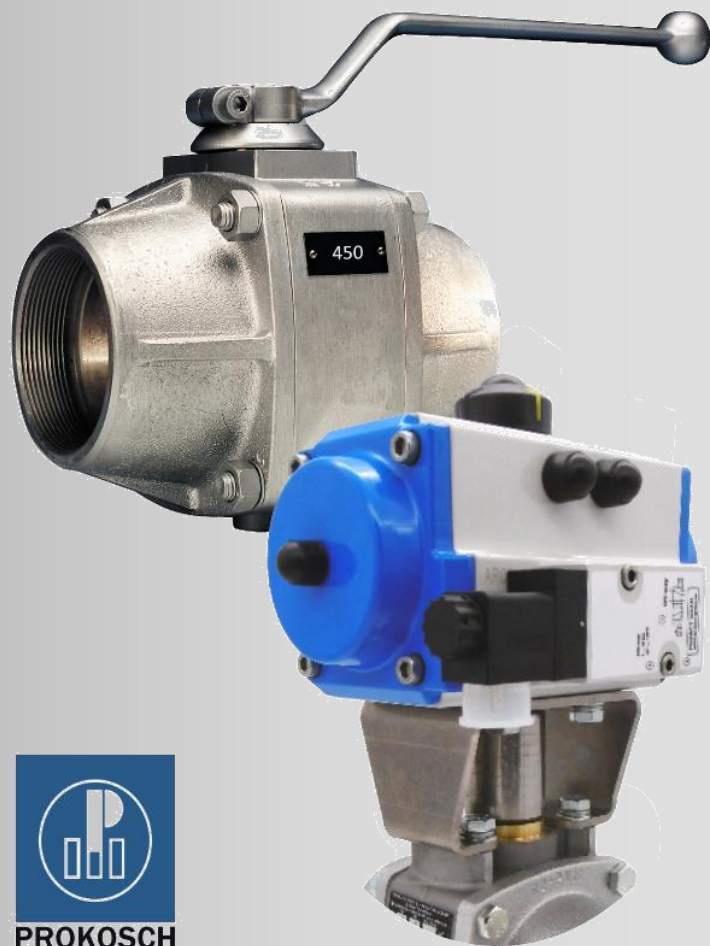
sizing and dimensions

Nominal Size	DN50...DN100 (2"...4")		
Pressure rating	PN16		
Inlet / outlet connection	Male tread DIN ISO 259	Male tread DIN ISO 259	
Body Materials	Cast iron	Aluminium	
Ball Materials	Hard chrome cast iron	Stainless Steel	
Seat Materials	PTFE	UHMWPE	stainless steel
Temperature rating	-40...180 °C	-40 °C...80 °C	-40 °C...230 °C
Gaskets	NBR	FKM	FEP
Temperature rating	-25...80 °C	-15...230 °C	-40...180 °C
Top assembly	Bare shaft	Hand lever	Actuator adapter
Actuation	Manual	Pneumatic	Electric
Standard options	aerodynamic outlet port for non-clogging application with solids		
	antistatic design for application in ATEX-environments		
	flushing port for flushing and for ejector application		
Actuator options	limit switches, pilot valve, ex-proof, pre-wiring of all components		
Custom options	additional armoring, nickel plating of aluminium for food grade application Couplings, ANSI, BS, JIS drilling of flanges and other customization per request		

Three-piece trunnion mounted ball valve. Suitable for shut-off and control of neutral liquids and gases, and suitable for on/off duty with granulated media, powders and dusts as also neutral liquid suspensions.

PROKOSCH BALL VALVES

© Prokosch Pumpen und Armaturen GmbH. All information contained herein is without prejudice and non-binding.



Female Pipe Thread Ball Valve Type 450

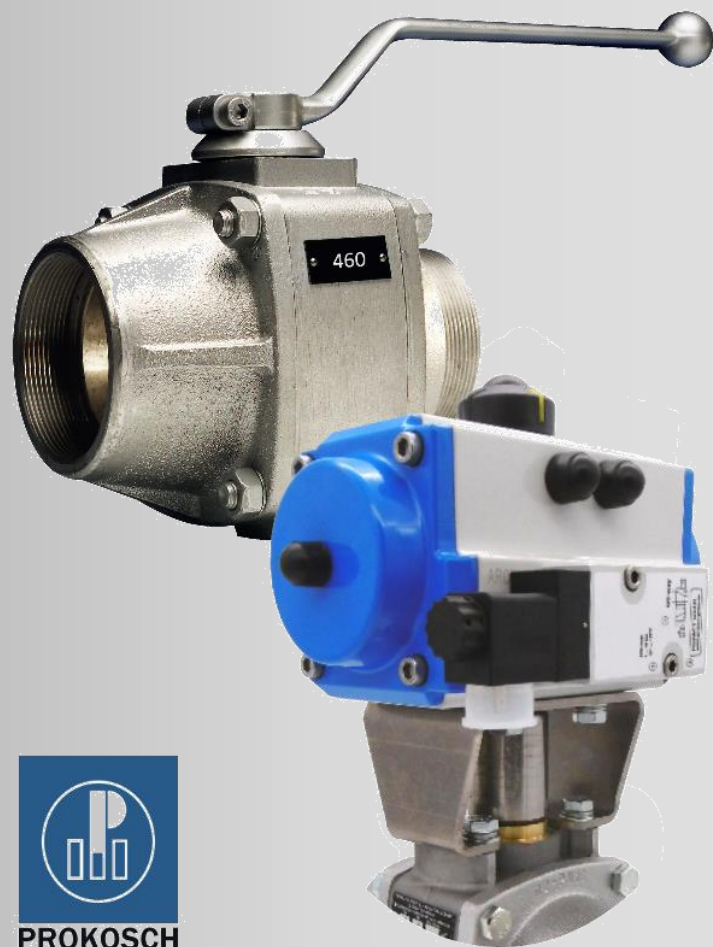
sizing and dimensions

Nominal Size	DN40...DN100 (1 1/2" ...4")		
Pressure rating	PN16		
Inlet / outlet connection	Female tread DIN ISO 259	Female tread DIN ISO 259	
Body Materials	Cast iron	Aluminium	
Ball Materials	Hard chrome cast iron	Stainless Steel	
Seat Materials	PTFE	UHMWPE	stainless steel
Temperature rating	-40...180 °C	-40 °C...80 °C	-40 °C...230 °C
Gaskets	NBR	FKM	FEP
Temperature rating	-25...80 °C	-15...230 °C	-40...180 °C
Top assembly	Bare shaft	Hand lever	Actuator adapter
Actuation	Manual	Pneumatic	Electric
Standard options	aerodynamic outlet port for non-clogging application with solids		
	antistatic design for application in ATEX-environments		
	flushing port for flushing and for ejector application		
Actuator options	limit switches, pilot valve, ex-proof, pre-wiring of all components		
Custom options	additional armouring, nickel plating of aluminium for food grade application ANSI, BS, JIS drilling of flanges and other customization per request		

Three-piece trunnion mounted ball valve. Suitable for shut-off and control of neutral liquids and gases, and suitable for on/off duty with granulated media, powders and dusts as also neutral liquid suspensions.

PROKOSCH BALL VALVES

© Prokosch Pumpen und Armaturen GmbH. All information contained herein is without prejudice and non-binding.



Female/Male Pipe Thread Ball Valve Type 460

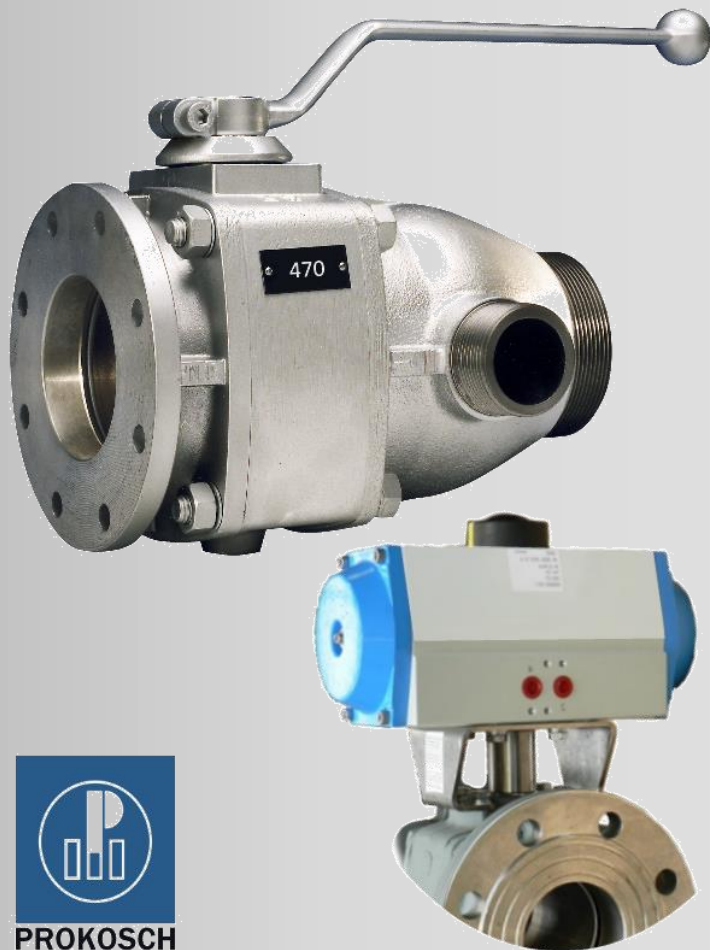
sizing and dimensions

Nominal Size	DN50...DN100 (2"...4")		
Pressure rating	PN16		
Inlet / outlet connection	Female tread DIN ISO 259	Male tread DIN ISO 259	
Body Materials	Cast iron	Aluminium	
Ball Materials	Hard chrome cast iron	Stainless Steel	
Seat Materials	PTFE	UHMWPE	stainless steel
Temperature rating	-40...180 °C	-40 °C...80 °C	-40 °C...230 °C
Gaskets	NBR	FKM	FEP
Temperature rating	-25...80 °C	-15...230 °C	-40...180 °C
Top assembly	Bare shaft	Hand lever	Actuator adapter
Actuation	Manual	Pneumatic	Electric
Standard options	aerodynamic outlet port for non-clogging application with solids		
	antistatic design for application in ATEX-environments		
	flushing port for flushing and for ejector application		
Actuator options	limit switches, pilot valve, ex-proof, pre-wiring of all components		
Custom options	additional armouring, nickel plating of aluminium for food grade application Couplings, ANSI, BS, JIS drilling of flanges and other customization per request		

Three-piece trunnion mounted ball valve. Suitable for shut-off and control of neutral liquids and gases, and suitable for on/off duty with granulated media, powders and dusts as also neutral liquid suspensions.

PROKOSCH BALL VALVES

© Prokosch Pumpen und Armaturen GmbH. All information contained herein is without prejudice and non-binding.



Ball Valve with Injector Type 470

sizing and dimensions

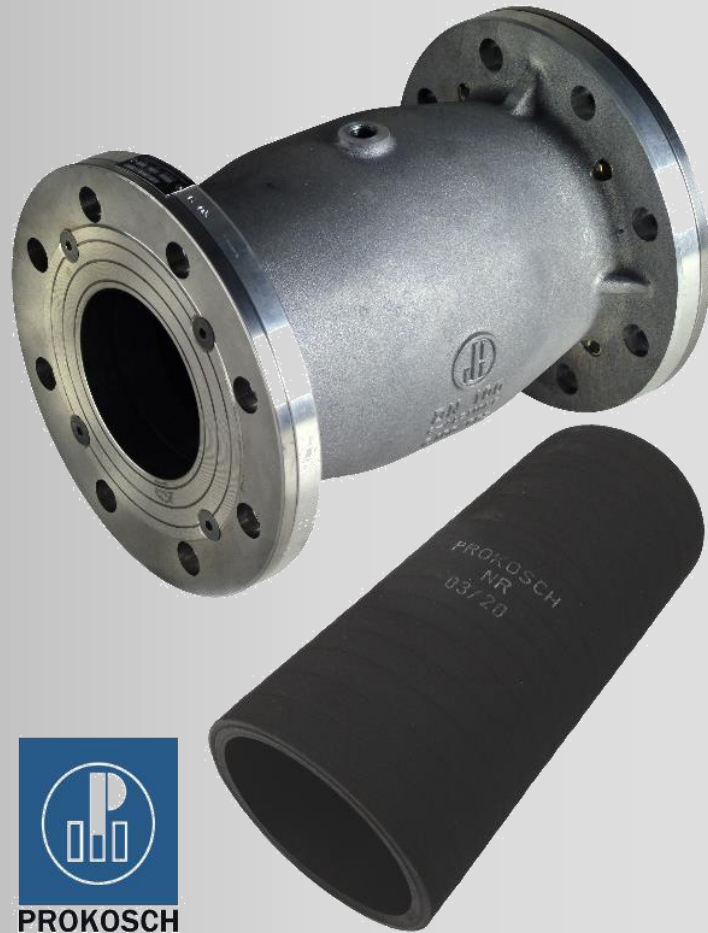
Nominal Size	DN80...DN100 (3"...4")		
Pressure rating	PN10		
Inlet / outlet connection	Female tread DIN ISO 259	Male tread DIN ISO 259	
Body Materials	Cast iron	Aluminium	
Ball Materials	Hard chrome cast iron	Stainless Steel	
Seat Materials	PTFE	UHMWPE	stainless steel
Temperature rating	-40...180 °C	-40 °C...80 °C	-40 °C...230 °C
Gaskets	NBR	FKM	FEP
Temperature rating	-25...80 °C	-15...230 °C	-40...180 °C
Top assembly	Bare shaft	Hand lever	Actuator adapter
Actuation	Manual	Pneumatic	Electric
Standard options	aerodynamic outlet port for non-clogging application with solids		
	antistatic design for application in ATEX-environments		
	flushing port for flushing and for ejector application		
Actuator options	limit switches, pilot valve, ex-proof, pre-wiring of all components		
Custom options	additional armouring, nickel plating of aluminium for food grade application Couplings, ANSI, BS, JIS drilling of flanges and other customization per request		

Three-piece trunnion mounted ball valve with integrated injector. Suitable for on/off and pneumatic conveying duty with granulated media, powders and dusts as also liquid suspensions.



PROKOSCH PINCH VALVES

© Prokosch Pumpen und Armaturen GmbH. All information contained herein is without prejudice and non-binding.



Pinch Valve Type 500

sizing and dimensions

Nominal size	DN80...DN100 (3"..."4")		
Body pressure rating	PN6		
Inlet / outlet connection	Flange DIN EN 1092-1	Flange DIN EN 1092-1	
Body material	Aluminium		
Flange material	Aluminium	Stainless Steel	
Sleeve materials	Standard NR	Food Grade NR	Food Grade EPDM
Temperature rating	-40...180 °C	40 °C...80 °C	-40 °C...230 °C
Maximum system pressure	4 Bar		
Required control air pressure	System pressure + 2 Bar		
Standard options	Integrated control valve (solenoid valve)		
	antistatic design for application in ATEX-environments		
	flushing port for periodic flushing of the valve housing		
Actuation options	Integrated control valve setup for flow regulation duty		
Custom options	nickel plating of aluminium flanges for food grade application, ANSI, BS, JIS drilling of flanges and other customization per request		



Pneumatically operated pinch valve. Suitable for on/off and control duty with gases, liquids, slurries, granulated media, powders and dusts as also abrasive and non-abrasive liquid suspensions.

PROKOSCH PINCH VALVES

© Prokosch Pumpen und Armaturen GmbH. All information contained herein is without prejudice and non-binding.

Tank Truck Pinch Valve Type 520

sizing and dimensions



Nominal size	DN80...DN100 (3"..."4")		
Body pressure rating	PN6		
Inlet / outlet connection	TW flange DIN 28460	TW flange DIN 28460	
Body material	Aluminium		
Flange material	Cast iron	Stainless Steel	
Sleeve materials Temperature rating	Standard NR -40...180 °C	Food Grade NR 40 °C...80 °C	Food Grade EPDM -40 °C...230 °C
Maximum system pressure	4 Bar		
Required control air pressure	System pressure + 2 Bar		
Standard options	Integrated control valve (solenoid valve)		
	flushing port for periodic flushing of the valve housing		
Actuation options	Integrated control valve setup for flow regulation duty		
Custom options	nickel plating of aluminium flanges for food grade application, ANSI, BS, JIS drilling of flanges and other customization per request		

Pneumatically operated pinch valve. Suitable for on/off and control duty with gases, liquids, slurries, granulated media, powders and dusts as also abrasive and non-abrasive liquid suspensions.

PROKOSCH INJECTORS

© Prokosch Pumpen und Armaturen GmbH. All information contained herein is without prejudice and non-binding.

Injector Type 360

sizing and dimensions

Nominal Size	DN80...DN100 (3"...4")	
Pressure rating	PN10	
Inlet / outlet connection	Female tread DIN ISO 259	Male tread DIN ISO 259
Air connection	Male tread DIN ISO 259	
Body Material	Cast iron	Stainless Steel
Nozzle Material	Steel	Stainless Steel
Gaskets	NBR	PTFE
Temperature rating	-25...80 °C	-40...230 °C
Standard options	screw-on outlet flange or coupling connection	
	Screw-in inlet flange or coupling connection	
	Hard chrome plating of cast iron nozzle	
Custom options	customizations per request	



*Full bore in-line-injector. Suitable for pneumatic conveying duty with granulated media, powders and dusts.
The injector can also be fitted directly to PROKOSCH type 410, 430, 440 and 460 ball valves.*

BALL VALVE ORDER CODE

X**X****X**/**X****X****X**/**X****X**/...

Type Code	Inlet Connection	Outlet Connection	Size Code	DN40	DN50	DN65	DN80	DN100	DN125	DN150
400	Flange DIN EN 1092-1	Flange DIN EN 1092-1	Type 400	n/a	50	65	80	100	125	150
410	Flange DIN EN 1092-1	male pipe thread DIN 259	Type 410	n/a	50	65	80	100	n/a	n/a
420	TW-Flange DIN 28460	TW-Flange DIN 28460	Type 420	n/a	50	65	80 ⁴	100	n/a	n/a
430	TW-Flange DIN 28460	male pipe thread DIN 259	Type 430	n/a	50	65	80	100	n/a	n/a
440	male pipe thread DIN 259	male pipe thread DIN 259	Type 440	n/a	50	65	80	100	n/a	n/a
450	female pipe thread DIN 259	female pipe thread DIN 259	Type 450	1,5	2	2,5	3	4	n/a	n/a
460	female pipe thread DIN 259	male pipe thread DIN 259	Type 460	n/a	50	65	80	100	n/a	n/a
470	TW-Flange DIN 28460	male pipe thread DIN 259	Type 470	n/a	n/a	n/a	80	100	n/a	n/a

Material Code	Valve Body	Ball	Seats	Seat Type	Gaskets
1	Cast Iron	Hard chrome plated cast iron	Reinforced PTFE	Special casing spring loaded	FKM
2	Cast Iron	Hard chrome plated cast iron	Reinforced PTFE	Standard O-ring loaded	NBR
3	Aluminium	Hard chrome plated cast iron	Reinforced PTFE	Special casing spring loaded	FKM
4	Aluminium	Hard chrome plated cast iron	Reinforced PTFE	Standard O-ring loaded	NBR
5	Aluminium	Aluminium	Reinforced PTFE	Standard O-ring loaded	NBR
6	Cast Iron	Stainless Steel	Reinforced PTFE	Special casing spring loaded	FKM
7	Cast Iron	Stainless Steel	Reinforced PTFE	Standard O-ring loaded	NBR
8	Aluminium	Stainless Steel	Reinforced PTFE	Special casing spring loaded	FKM
9	Aluminium	Stainless Steel	Reinforced PTFE	Standard O-ring loaded	NBR
10	Cast Iron	Stainless Steel	Stainless steel	Metal-to-metal O-ring loaded	FKM

Code	Standard option
/OH	Bare shaft, without hand lever
/SO	prepared for actuator adapter assembly ¹
/FA	Aerodynamic non-clogging outlet port ²
/SB	Flushing port on the side of the valve body
/AS	Antistatic device
/RAL#	Ground and RAL#### epoxy coating ³

Example: 420/80K/9/SO/FA

- 1) Installation of the actuator requires a separate mounting bracket. Mounting brackets are available from PROKOSCH.
- 2) Mainly for pneumatic conveying application in solids handling.
- 3) Cast iron valves are grounded as a standard, optionally the valves may be delivered in PROKOSCH blue epoxy coating or in a color designated by the customer.
- 4) Type 420 DN80 flanges available in short "K" or Long "L" design. See sizing and dimensions on our website for more information.
- 5) Available only in DN40 and DN50

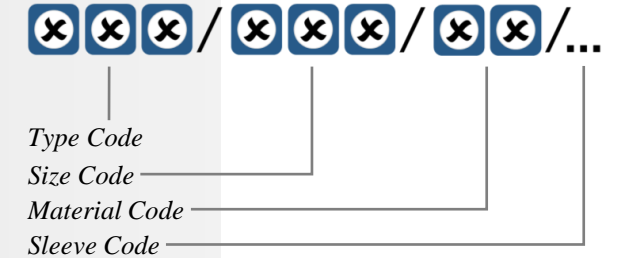
PINCH VALVE ORDER CODE

Type Code	End Connections
500	Flange DIN EN 1092-1
520	TW-Flange DIN 28460

Size Code	Available Sizes	
Type 500	80	100
Type 520	80	100

Material Code	Body	Flanges
AG	Aluminium	cast iron
AN	Aluminium	Nickel Plated Aluminium
AV	Aluminium	Stainless Steel

Sleeve Code	Sleeve Material
NS	Standard NR Black
NW	Food Grade NR White
EP	Food Grade EPDM



Example: 520/100/AG/NS

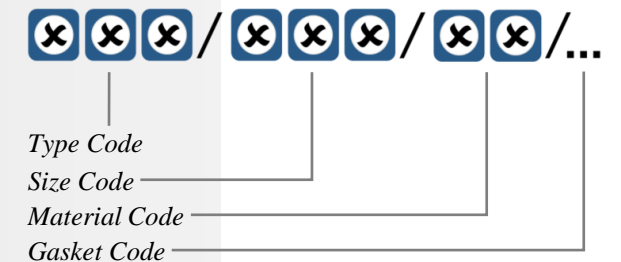
INJECTOR ORDER CODE

Type Code	Inlet Connections	Outlet Connections
360	female pipe thread DIN 259	male pipe thread DIN 259

Material Code	Body	Nozzle
GS	Cast iron	Steel
GV	Cast iron	Stainless Steel
VV	Stainless Steel	Stainless Steel

Size Code	Available Sizes	
Type 360	80	100

Gasket Code	Gasket Material
NB	Standard NBR
PT	Food Grade PTFE



Example: 360/80/VV/NB



With a history dating back to the 50's of the last century, PROKOSCH is one of the leading manufacturers of shut-off valves and piping components for granulated and powdered media, abrasive and adhesive materials, slurry, sludges as well as flammable liquids and hazardous materials.

Our valves meet the highest technical, economic and quality requirements. Our flexible modular system enables us to fall back on already proven solutions as well as to realize individual solutions together with the user.

With more than sixty years of technical knowledge and experience and more than two thousand satisfied customers worldwide, PROKOSCH is a competent and reliable partner for the industry.

PROKOSCH - Quality you can rely on.

PROKOSCH Pumpen und Armaturen GmbH

In der Breitwiese 9
DE-76684 Östringen
Deutschland - Germany

☎ +49 7259 9103 0

✉ info@prokosch.de

🌐 www.prokosch.de

